

EXPEDITION

SUR LES TRACES DE DARWIN

MARCHE



THE TEAM



EMY



LOLA



NINA



CONSTANCE

IT REPRESENTS...

> 3000 STUDENTS

1 FOUNDATION

A NETWORK OF OVER 18,000 ALUMNI

24 RESEARCH UNITS, INCLUDING ONE RESEARCH AND
DEVELOPMENT UNIT

790 HECTARES OF EXPERIMENTAL FOREST

1 EXPERIMENTAL FARM

1 TECHNOLOGY HALL

AgroParisTech
Talents d'une planète soutenable

AGRICULTURE SCIENCES

SHANGHAI RANKING'S GLOBAL
OF ACADEMIC SUBJECTS 2023



FRANCE



EUROPE



WORLD

BIOLOGY

LE FIGARO ÉTUDIANT 2024



FRANCE

MASTERS AND OPPORTUNITIES IN...

BIOTECH, AGRICULTURAL DEVELOPMENT,
TOXICOLOGICAL RISK FOR ECOSYSTEM AND
HUMAN HEALTH, ECONOMICS AND BUSINESS
MANAGEMENT, MANAGEMENT OF WATER,
ENVIRONMENTAL AND ECOSYSTEMS
MANAGEMENT, SCIENCES AND TECHNOLOGIES
OF BIOLOGY, NUTRITION...



OUR PROJECT

HIGHLIGHTS A WEALTH THAT NEEDS TO BE PROTECTED...

The Philippines is characterized by its many **endemic species** and multiple biomes with **unique ecosystems**.

Paradoxically, under the pressure of human activities, the country is **witnessing an erosion of its biodiversity** and currently faces many **conservation challenges**.



OUR GOALS

- ✓ **Analyse** the current status of emblematic species discovered by Alfred Marche
- ✓ **Meet & interview the actors** on the front line, exchange with them to convey their knowledge
- ✓ **Raise awareness** of the protection of ecosystems and biodiversity
- ✓ **Create a report** that celebrates the beauty and richness of biodiversity to raise awareness of its fragility, while inspiring admiration and respect.

TIMELINE



"Listen, observe, understand to better convey"

ON THE FOOTSTEPS OF A. ALFRED MARCHE

... Or how have the ecosystems encountered 200 years earlier evolved ?

Antoine-Alfred Marche (1844 - 1898) was a French naturalist and explorer who organized and participated in several expeditions to Africa, the Philippines and the Mariana Islands.

During his expeditions he **collected many specimens** , including new species such as the *Ptilope de Marche* and the *Zostérops doré* that were named after him

After what seems to have been training at the **National Museum of Natural History** under the direction of Ernest Hamy, director of scientific missions at the Ministry of Public Instruction, he was sent in **1879** to Singapore and then to Manila. He would then **undertake numerous expeditions** to the Philippines.

= Our guiding thread

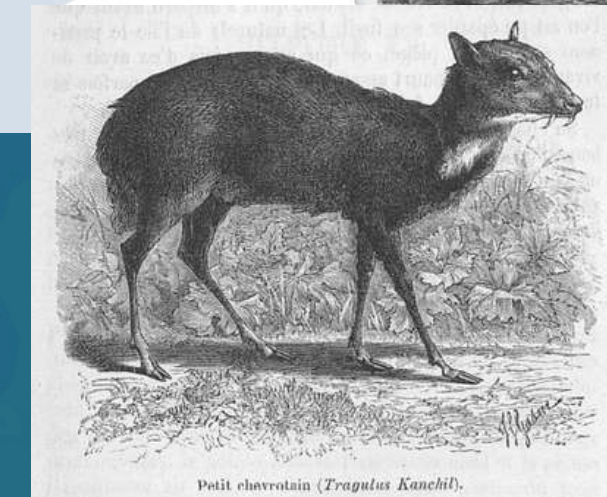
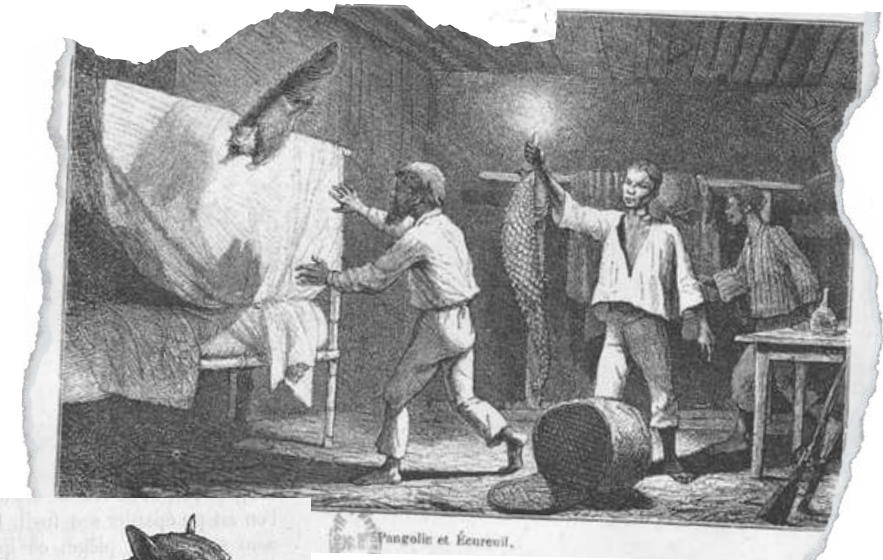


LUÇON ET PALAOUAN



SIX ANNÉES
DE VOYAGES AUX PHILIPPINES

PAR
ALFRED MARCHE



1

A PAPER TRAIL

In his logbook, Marche describes his daily life on the island. He records the living conditions, the weather and his expeditions in search of new species

2

EMBLEMATIC SPECIES

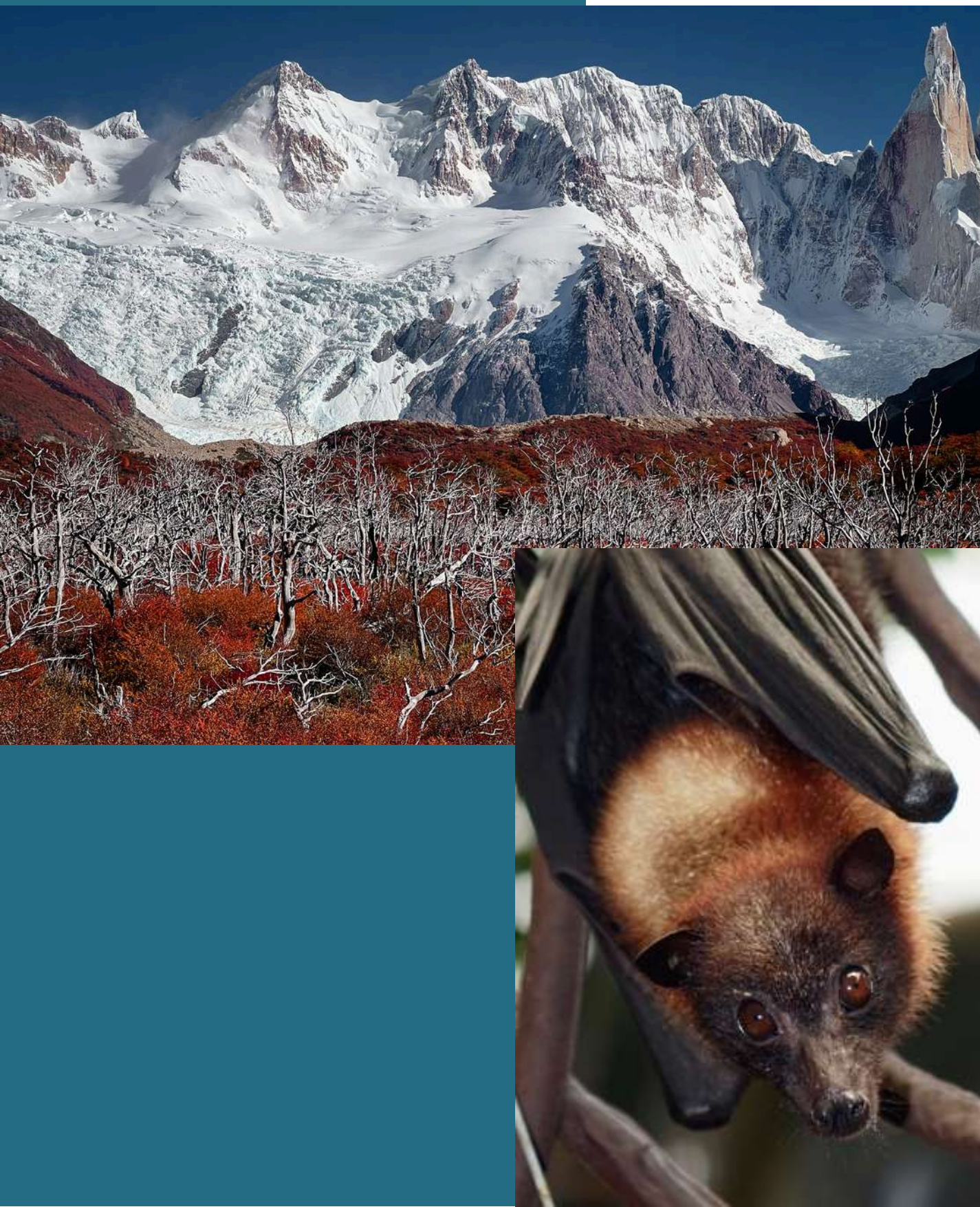
A way to establish a comparaison between the wildlife he encountered more than 200 years ago and the current state of the ecosystems

OUTCOMES AND VISIBILITY

OUR RETURN

GOALS

- ✓ **Transcribe** what we will have learned into a **format accessible to all.**
- ✓ **Open the debate** and **raise awareness** among younger audiences, not by using a moralizing tone...
- ✓ ...Also **showcase the beauty and richness of biodiversity** to highlight its **fragility**, while inspiring admiration and respect
- ✓ **A 1-hour video report mixing expert speeches and captivating images** (broadcasted in french engineering schools and high schools)
- ✓ **A photography exhibition** : a way to immortalize and reach new audience and ways of broadcast



THEY ALREADY TRUST US...

FRENCH FOUNDATIONS THAT SUPPORT US



SCIENTIST ORGANISATIONS IN PHILLIPINS WE WILL MEET



PALAWAN
MINDORO



BRANDS AND COMPANIES THAT GIVE US THEIR SUPPORT AND HELP FOR EQUIPMENT





EXPE WALLACE
2024 INDONESIE

2023



EN
IMAGES

THE PREVIOUS EXPEDITIONS

EXPE DARWIN
2023 AMERIQUE DU SUD



2024



2023



HOW COULD YOU TAKE PART IN THIS PROJECT ?

- ✓ Allowing us to follow your experts/scientists **on the field** in order to...
 - **Learn** more about the works that are led in your organization ;
 - **Observe** and **film the fauna** they are daily working close to ;
 - **Film the expedition** and the work that is done on the field (we need a lot of images to illustrates what will be said) ;

- ✓ Offering us **interviews** with your scientists and experts. A way for us to give a real **scientific background** and **credit** to our documentary

- When would they be free ?
- Would they be down to be filmed ?



- + As much as possible for you, **allowing us to take part** in a project/expeditions hosting us a few days/weeks ?

- + *Put us in touch with other organizations/associations that work in fields that match with our issues and that would be interested in our project*

& WHY ?

We will **highlight your organization** and the work you achieve through our documentary that will be **released to young students in sciences and biodiversity in France**

Share/transmit knowledge to young and passionate student

Take part in a **dynamic and inovative project** of students coming from a **renowned French school**

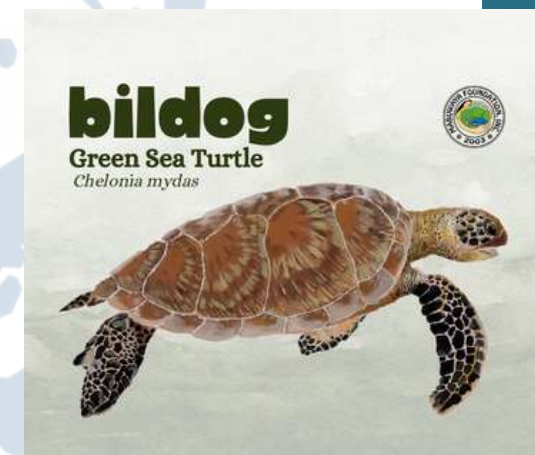
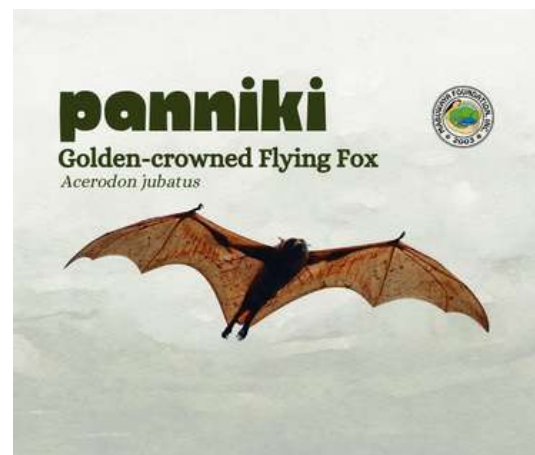
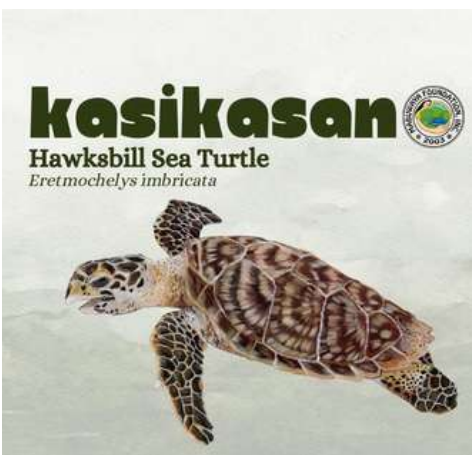


SUBJECT WE WOULD LIKE TO DISCUSS WHEN MEETING WITH YOU



Luzon

- Conservation & research program for the Philippine Crocodile :
 - What are your **missions** ? Are you **monitoring** the population in the wild? Do you **rehabilitate** the animals from the center back into the wild ? **How many areas** are you working on? Where exactly?
 - What research projects are you currently working on? And what topics will you be working on in April and May?



- Is there also **conservation & research programs** for these other species, or is it only about sharing information?
 - We would be intersted in learning more about the **endemics species of the Sierra Madre mountains** (go on the field to **observe** and **film** some, **interview** some experts...)



SUBJECT WE WOULD LIKE TO DISCUSS WITH YOU



- PROGRAMME D'ETUDE DU BINTURONG // BEARCAT STUDY PROGRAM :

En apprendre plus à propos des 3 thèmes d'étude :

1. La taille du domaine vital du binturong à Palawan ;
 2. Le comportement alimentaire et social du binturong à Palawan ;
 3. Les interactions entre le binturong et les forêts de Palawan.
- Les méthodes utilisées afin d'étudier les comportements de l'animal (photo surveillance, collier émetteur équipé d'un GPS)
 - Comment procédez vous à la réhabilitation des animaux dans leur milieu naturel, comment récupérez vous ces animaux ?
 - Quels sont les principales menaces qui pèsent aujourd'hui sur le binturong ?
 - Comment faites-vous le lien entre les études terrain et la sensibilisation en France ? Quel vecteur de transmission d'information ?



SUBJECT WE WOULD LIKE TO DISCUSS WITH YOU



- A game-changing idea : the development of **self-sustaining MPAs** through securing innovative funding and building sustainable revenue models
- Collaborative **co-management** on behalf of **local government**

On the field, about the conservation of the marine ecosystems and its biodiversity, ranging from the coral reefs, the mangroves to the seagrass beds (ex: Mahal na Pangalan Marine Park) :

- **Coral reefs conservation** : monitoring wildlife, reducing by-catch of endangered species, tackling the pollution at source...
- **Conservation program** for the olive ridley and green **sea turtles** in Mindoro
- Fighting illegal and destructive fishing (surveillance programs)
- **Mangrove conservation** area and the **wildlife** it hosts (Silonay Mangrove Conservation Ecopark)
- Creation of jobs and livelihoods for coastal fisher households



Monitoring wildlife and ecosystem health



Designing sustainable fishery management plans



Reducing by-catch of endangered species



Tackling pollution at the source

Source : Blue Alliance website

MINDORO

PALAWAN

